

LNP

Movin' up

Argentina's 2-1 victory over Nigeria assures it a berth in the World Cup round of 16

● Sports, Page C1



Always Lancaster

FOOD

Lancaster Whole Foods Market opens today and will sell items from local farmers.

● Page B1



LOCAL

The Scribbler shares news of an effort to reopen the Pequea Silver Mine to tours.

● Page A3



NATION & WORLD

The Supreme Court upholds President Trump's controversial travel ban.

● Page A12



The slaying and sexual assault of Christy Mirack **stumped detectives** for 25 years until new technology produced a **DNA match** that led them to a **Lancaster disc jockey**.

WHO IS RAY ROWE?



What we know about the suspect from records, archives, more

LINDSEY BLEST
LBLEST@LNPNEWS.COM

The man who killed 25-year-old Christy Mirack was likely someone who wouldn't stand out in a crowd, according to a behavioral profile created by the FBI.

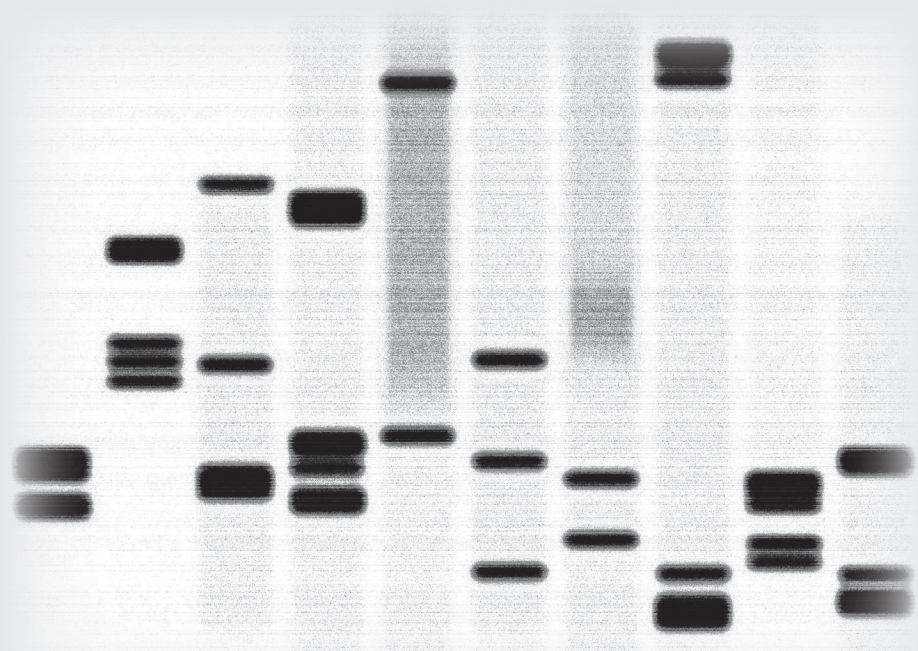
He likely wasn't the center of attention or the life of the party, according to news reports on the profile in the years after the unsolved 1992 brutal slaying of the Rohrerstown Elementary School teacher.

But the man police arrested Monday in Mirack's death doesn't quite fit those characteristics. Raymond "DJ Freez" Rowe has spent the nearly 25 years since Mirack's murder growing his entertainment business.

In the past 15 years, the 49-year-old Lancaster man has worked at venues not only in central Pennsylvania, but also in Philadelphia, New York and New Jersey.

Rowe's website for his Freez Entertainment business claims he does about 150 parties and events a year, including

ROWE, page A6



GETTY IMAGES

Investigators used DNA samples obtained from objects discarded by Raymond Rowe at an event he was working as a DJ last month to identify him as a suspect in the 1992 killing of Christy Mirack. On Monday, police arrested Rowe on charges of criminal homicide.

Investigators narrowed in on suspect using new genealogy analysis, undercover detail

JUNIOR GONZÁLEZ
JGONZALEZ@LNPNEWS.COM

Nearly 26 years after the murder of Christy Mirack, it took just about a month and a half after a lead for detectives to heat up the otherwise solidly cold case.

The lead, according to a criminal affidavit, was the result of a sales pitch.

Thom Shaw, a forensic artist at DNA phenotyping organization Parabon NanoLabs, placed a call to Lancaster County Detective Christopher Erb on May 1.

The two worked on the Mirack case in March 2017, when Parabon

ARREST, page A7



SUZETTE WENGER | STAFF PHOTOGRAPHER

At a news conference Monday in Lancaster, Steve Armentrout, of Parabon NanoLabs, a DNA engineering company, talks about the science involved in the Christy Mirack case.

BUSINESS

Retailer looking to expand center

Urban Outfitters may grow Gap facility, seeks tax perks

TIM MEKEEL
TMEKEEL@LNPNEWS.COM

The future is arriving much faster than Urban Outfitters expected.

The company had thought it would need to expand its massive e-commerce fulfillment center in Gap some distant day.

Well, that day is coming sooner rather than later.

Urban Outfitters already is pondering whether to roughly duplicate its existing fulfillment center, which opened just three years ago.

The \$106 million facility covers 1.6 million square feet, more space than Park City Center. It has 800 full-time and 300 temporary employees, filling orders that customers place on its website.

"It would be a very, very big building and a lot, a lot of jobs," said David Ziel, the company's chief development officer.

Ziel cautioned that Urban Outfitters' management has yet to give the project a green light.

"Right now, it is not a definite go," he said. "We are internally evaluating the (potential) expansion" in light of the company's long-term growth forecasts.

A decision could come this summer, Ziel indicated.

The executive noted that when Urban Outfitters was planning its initial e-commerce fulfillment center in Gap, a second such facility here was part of a 20-year growth plan.

URBAN OUTFITTERS, page A5

ENVIRONMENT

Study: Dairy in peril from climate shift

Global warming projected to diminish feed, milk yield

AD CRABLE
ACRABLE@LNPNEWS.COM

Lancaster County's dairy farmers could be facing devastating drops in corn yields by 2050 because of global warming, according to a new research study.

"If climate projections hold, it will threaten the dairy industry in Lancaster County," said Heather Karsten, an associate professor of crop production ecology at Penn State.

That's because extremely high summer temperatures in Lancaster County could mute key reproduction phases in corn-plant growth, decreasing yields for a winter feed that is a linchpin in affordable dairy farming, Karsten said in an interview with LNP.

The extreme temperatures — which are projected to be higher in Lancaster County than anywhere else in the Northeast — not only could retard reproduction at a critical time but could result in corn plants that mature faster but grow smaller, she said.

DAIRY, page A8

MORE INSIDE, ONLINE

● DNA DIVE: Lancaster becomes one of first cities to make arrest with "genetic genealogy" analysis. **Page A7**

● BUSINESSES REACT: Clients of suspect Raymond Rowe scramble to find replacement DJs after his arrest. **Page A6**

● NEVER GAVE UP: Investigator who was involved in high-profile cases dies one day after arrest made in Mirack case. **Page A7**

● MIRACK FAMILY SPEAKS OUT: Christy Mirack's brother shares his family's reaction to the arrest. **Page A6**

● TIMELINE: See a video of key moments in the murder case. **LancasterOnline.com**

● LOCAL REACTION: Hear from people who were at a "DJ Freez" wedding reception last Friday. **LancasterOnline.com**